

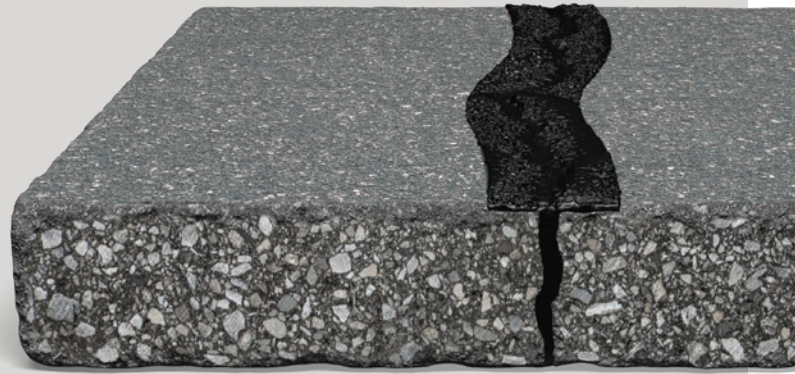
# ELASTOFLEX™

HOT-APPLIED CRACK AND JOINT SEALANTS



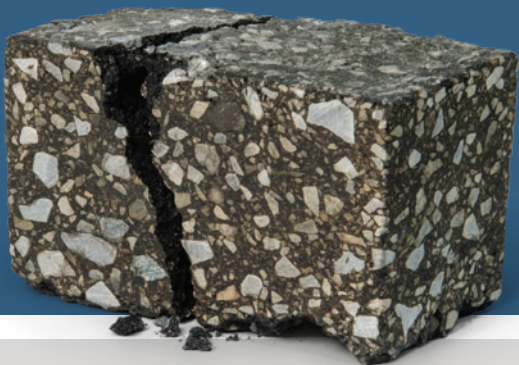
## PROVEN QUALITY SINCE 1975

Our original line of crack sealants, Elastoflex™ products have a long history of quality and performance. These products have been designed to meet (and in many cases exceed) industry standard specifications, while also applying a budget-conscious formulation strategy.



## NATURAL EXPANSION JOINTS

While asphalt pavement is designed to be flexible, it isn't always able to withstand the extreme conditions nature can throw at it. We can't stop this excessive movement, but we can treat the resulting cracks as "natural expansion joints," sealing out water and incompressible debris and preventing cracks from growing into larger problem areas.



## THINKING OUTSIDE THE BOX



### SAFE, FAST, AND EASY

With no tape to cut, and our "Quick-Zip" perforation, ZipBox eliminates the need for dangerous box-cutters and literally opens in seconds. Also, the lay-flat design simplifies the removal of cardboard waste. Spend more time applying sealant and less time opening it with ZipBox.

### MELTABLE DONE RIGHT

We did it first, and we did it best. PolySkin is the industry's only structural, stable, quick-melt packaging solution. PolySkin pallets won't slump or sag, and the expanded polymer beads float until fully dissolved to eliminate the mess and clogs common with "plastic bag" solutions.



Quality-First™ means that Maxwell Products will never compromise the quality of our products just to beat a competitor's price. We believe that true value requires a delicate balance between quality and cost, and achieving that balance will always be at the forefront of our efforts.



MAXWELLPRODUCTS.COM

800.266.2090

# KEEPING IT 100



*Actual photo of Tensile Adhesion Test*

Maxwell Products tests 100% of the material we produce. While many manufacturers perform skip-lot testing (only testing periodic batches) or only test when specifically required by contract, we invest in our customers' satisfaction by testing every batch of material we make. If it doesn't meet the promised specifications, it never leaves our facility.

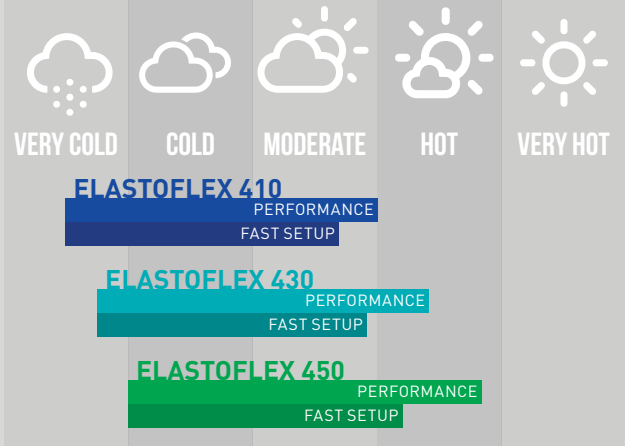


Our products and packaging are **fully compatible** with melters produced by third-party equipment manufacturers, including **Crafco, Cimline, Bearcat, Marathon, SealMaster**, and more.\*

## ELASTOFLEX™

### 400 Series

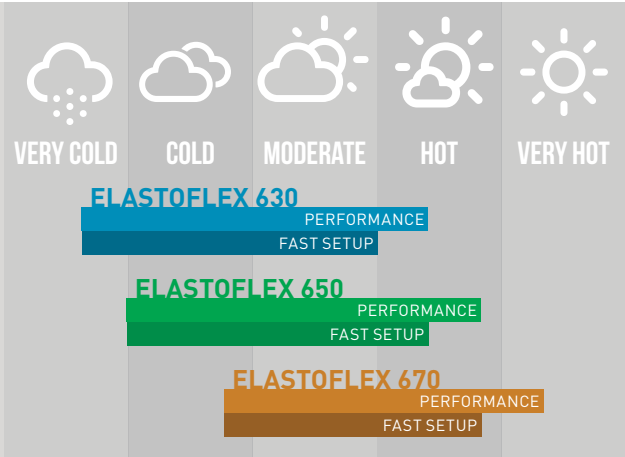
The Elastoflex 400 series is designed as a highway sealant aimed at providing affordable, consistent performance in high-traffic areas.



## ELASTOFLEX™

### 600 Series

The Elastoflex 600 series is designed to excel in demanding applications such as parking lots, city streets, and other areas where sealants are expected to set up quickly and resist tracking.



\* To confirm compatibility with a specific brand or model of melting equipment, please contact a Maxwell Products representative. All referenced brands and trademarks are the property of their respective trademark holders. These trademark holders are not affiliated with Maxwell Products, Inc. and do not sponsor or endorse any claims made by Maxwell Products, Inc.